
SLORRM eNews

1 message

San Luis Obispo Railroad Museum <media@slorrm.com>
Reply-To: San Luis Obispo Railroad Museum <media@slorrm.com>

Tue, Aug 16, 2016 at 5:07 AM



From the Freighthouse SLORRM eNews

PRIVATE CAR EXCURSIONS SATURDAY, SEPTEMBER 17th



SEE HOW THE OTHER HALF LIVED - BACK IN THE DAY !
SATURDAY, SEPTEMBER 17TH

Choose the excursion that fits your schedule best and see how people of means traveled the beautiful California coast in the heyday of rail. (3 OPTIONS AVAILABLE - SEE BELOW)

OPTION 1 - MORNING EXCURSION: Leave the SLO Amtrak station at 6:55 am on the morning Surfliner to see the day begin as you cruise south to Santa Barbara (bring your cameras). After a one hour layover in S.B., you will board the luxurious OVERLAND TRAIL

LOUNGE CAR (see above), arriving back in SLO at 1 pm. Feel free to bring champagne and caviar! Cost per person round trip = \$99.

OPTION 2 - NEW AFTERNOON EXCURSION: Not a morning person? Leave SLO at 2pm on the beautiful SILVER SPLENDOR DOME CAR with its comfortable table seating and all-around observation windows made for unparalleled viewing (see above). Stop in Santa Barbara for an hour, then enjoy the coastal sunset as you return north on the evening Surfliner, arriving back in SLO at 8:30pm. Bring a picnic dinner, purchase a meal in S.B., or try out the new Surfliner menu and eat at your leisure as you return home. Cost per person round trip = \$119.

OPTION 3 - ALTERNATE AFTERNOON EXCURSION: Same as Option 2, but ride on the OVERLAND TRAIL LOUNGE CAR. Cost per person round trip = \$99.

All 3 trips include FREE admission to the Museum on September 17th.

Contact media@slorm.com or call 805-548-1894



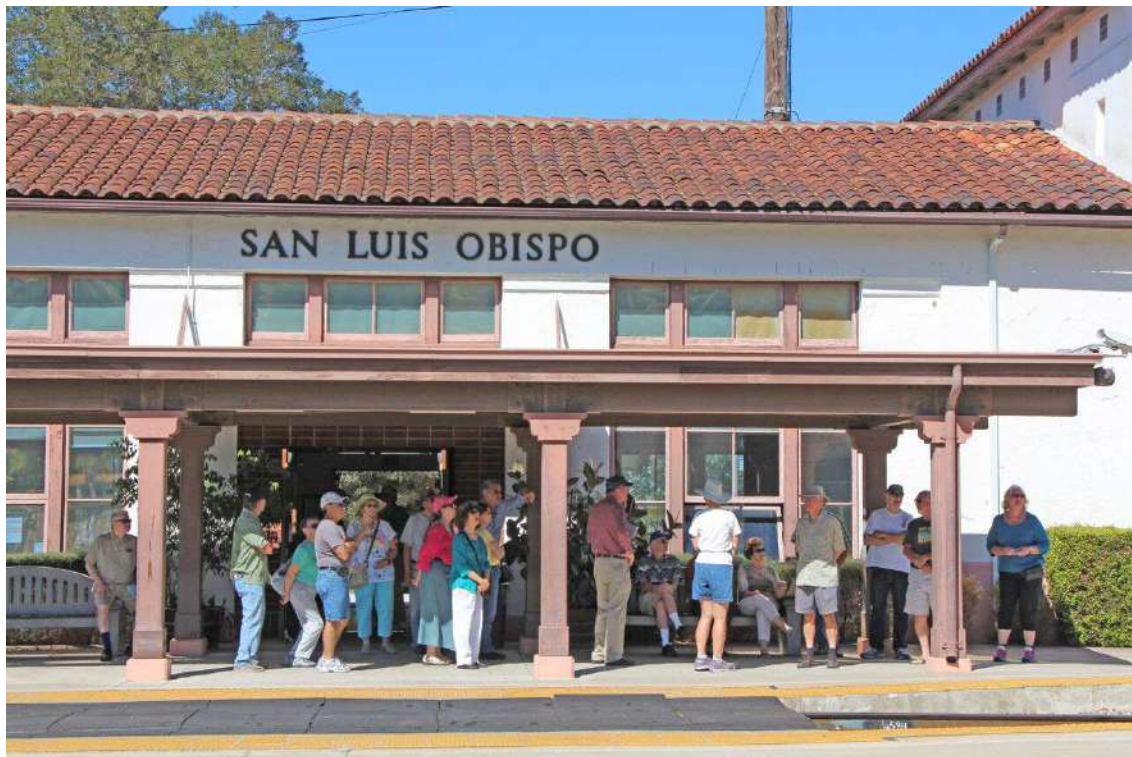
OUR "NEW" 1903 SOUTHERN PACIFIC TANK CAR

Come see our CS25-A tank car recently acquired by the Museum. Thanks go to Union Pacific, who donated the vintage car to us, and to Phillips 66, whose grant allowed us to pay for it to be transported from northern California. See it above being lifted and then lowered onto our display track. Many people comment on its green paint. That came from its last job working for the U.S. Forest Service, where it was used as a water car.



GUINNESS WORLD RECORD
Saturday, September 17, 2016
SLO Railroad Museum, 10 am to 4 pm

See more of these z-scale cars when SLORRM member and docent Bernd Schumacher is officially awarded the Guinness World Record for the largest collection in the world of these tiny wonders. See layouts that fit in a suitcase. Enjoy Guinness beer and German food and get into the mood for Oktoberfest and the Central Coast Railroad Festival.



POMAR JUNCTION WINE TRAIN EXCURSION
FRIDAY, OCTOBER 7, 2016

Leave the SLO Amtrak Station at 3:35 pm on Friday afternoon, October 7th, and travel on the Coast Starlight over the beautiful Cuesta Grade to Paso Robles. From the Paso station, you will be transported to Pomar Junction Winery for their Train Wreck Friday party. Listen to local favorite, Louie Ortega, enjoy the wine-tasting included in your fare (normally an extra \$10 charge), buy dinner or bring your own picnic, and then get transported back to the SLO Amtrak Station. Cost is \$75 per person for the entire excursion. Contact media@slorm.com or call 805-548-1894 for tickets.



CENTRAL COAST RAILROAD FESTIVAL
OCTOBER 7th THROUGH 9th, 2016

The Railroad Festival is coming up in October, so mark it on your calendar. There will be many activities throughout the County, including Railroad Story Times at local libraries, a list of local train layouts open to the public for the weekend, a swap meet, a kid's play area, face painting, and a bike ride along the historic Pacific Coast Railway right-of-way. Click on the website below for more info.

SUNDAY, OCTOBER 16, 2016
BOY SCOUT RAILROADING MERIT BADGE
SOLD OUT

You can join the next group of Boy Scouts to earn their Railroading Merit Badge at the Museum. Sign up early for the next class and get your model railroad kit with plenty of time to complete it before the meeting. For more information, click on our website below or contact

Saphya at:

Email: RRMeritBadge@SLORRM.com

Phone: 805-305-6019

ARRIVING: 1 PM
SANTA ON THE SURFLINER
SATURDAY, DECEMBER 3RD, 2016

Plan ahead to bring your little ones to enjoy the Museum done up in its holiday finery and to welcome Santa as he arrives at the Amtrak station on the afternoon Surfliner. Then walk with him to the Museum where they can share their holiday wishes with the jolly old elf on La Cuesta, our 1926 Lounge Car.

MEMBERS: Would you like to become a hands-on member of SLORRM? Do you like local railroad history? Do you just like talking to people? Or learning how to restore a historic artifact or railroad equipment? Or building model railroads? There are opportunities for all volunteers here at the Museum. Contact media@slorm.com



Facebook



Twitter



Website



Email



Instagram

Copyright © 2016 San Luis Obispo Railroad Museum, All rights reserved.
You are receiving this as a member or friend of the San Luis Obispo Railroad Museum.

Our mailing address is:
San Luis Obispo Railroad Museum
1940 Santa Barbara Street
San Luis Obispo, CA 93401

[Add us to your address book](#)

[unsubscribe from this list](#) [update subscription preferences](#)

MailChimp