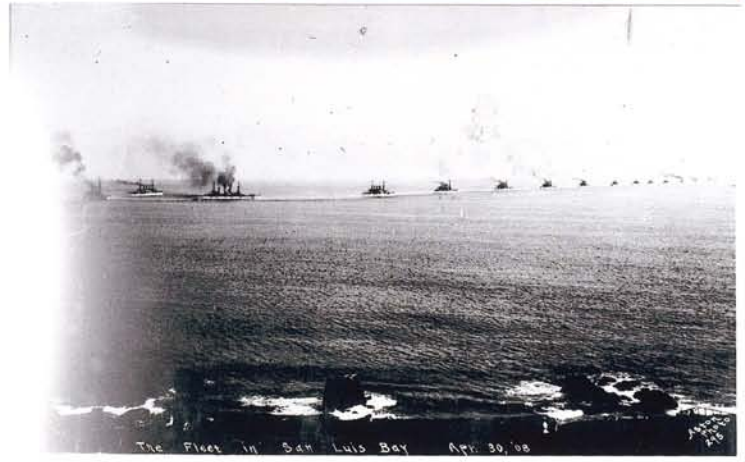


1. #1 Fleet Day 1908 lots of people
2. #2 1962 Front Street - old cars
3. #8 opening Al Martin's Pavilion in 1912
4. #19 Union oil co cottages / tank farm
5. #21 hauling stills or heaters/superintendents house
6. #23 sand car on beach near wharf 1912
7. #24 asphalt plant 1911
8. #26 beach goers 1962
9. #32 sinking of Queen of Pacific
10. #35 advertisement for Hotel Marre
11. #37 Tankers in water 1925
12. #38 extending breakwater 1908/1913. Guys and construction
13. #40 lighthouse built 1890
14. #42 steamer Santa Clara docked at wharf 1907
15. #43 port Harford wharf /Hotel 1913
16. #48 fire House #3
17. #49 Avila School- -in class 1902
18. #56 Traffic 1963
19. #57 Train Drum (ny)
20. #58 Horse-drawn Union oil tank farm*
21. #61 Rock from Morro 1903-08
22. #63 Cenet Family Picnic
23. #66 Sycamore Springs Train (ny)
24. #71 Front Street 1937
25. #76 The Gypsy 1873
26. #78 Custom House 1927
27. #78 More Custom House 1927
28. #79 Avila Grocery 1959
29. #85 Interior Horse Railroad Tunnel
30. #90 Avila Refinery 1915*
31. #91 Picnic 1909
32. #93 Pool Hall (old)
33. #94 Union Oil Pump Station*
34. #95 Lumberyard 1912
35. #104 Perry Martin
36. #107 Sunbathing 1964
37. #132 John Harford
38. #133 Mrs. John Harford
39. #135 Union Oil Refinery*
40. #166 Salmon Fishing 1965
41. #173 Logan Brothers Warf Repair 1915
42. #182 Old Oak Tree???
43. #195 Stores and Post Office 1909 (2 negatives)
44. #247 Old Lighthouse and Buildings
45. #254 Reefs of Oil 1926
46. #263 Future Beach 1940
47. #266 Train #104 @ Hotel (compare w/ #279)
48. #268 Railroad Bridge 1918 (11 negatives)
49. #269 Union Oil Buildings (Multiple) 1918-19
50. #271 Parking Lot 1920s
51. #278 Avila Stage Line 1916
52. #279 Train Engine #105 (compare w/ #266)
53. #280 Hotel Marre 1884
54. #282 Train in front of school 1938
55. #290 Avila from Pier 1912
56. #291 Albacore 1939
57. #295 Martinez
58. #299 Cave Landing Hoist (ny)
59. #302 Lighthouse w/ Ladies - Old!
60. #307 Port San Luis Tanks 1915*
61. #311 Excursion Train @ Hotel 1910
62. #313 Fish Market 1918!!!
63. #316 Freight Train 1911
64. #318 Avila Fire Department (recent)
65. A Martins w/ Big Fish 1961
66. B Halloween Parade 1960s



U. Cant
 Photo
 Arch Beach, California
 1930s
 Fleet day - 1908
 April 30, 1908
 Use last one



The Fleet in San Luis Bay Apr. 30, 08



2
 Sunday April 15, 1902
 Front Street
 Arch Beach
 California
 U. Cant



8
 Opening of Martin's Pavilion June 2, 1912
 Arch Beach
 U. Cant

opening Martin's Pavilion Arch June 2, 1912
 Photo 1124

Section #2 (requested by Unocal)

1. #A Distance shots of pier/beach (3 negatives)
2. #4 Beach with person/dog - tank farm 1912
3. #5 Avila Adobe Hotel and other buildings 1885
4. #6 Avila Adobe Hotel/beach after fire 1905
5. #7 Retaining wall 1908
6. #9 Arial view of Port San Luis 1940
7. #10 Avila Beach 1911
8. #15 First pipeline through Avila 1906
9. #16 Gilliam Apartments Marre Slaughter House
10. #17 Al Martin's Camp Ground - Avila
11. #18 Avila looking East 1915
12. #20 Shows old drain ditch
13. #70 Avila - Looking North East
14. #80 Bridge and pier after flood 1956 (2 negatives outside wrapping)
15. #82 Town of Avila 1963
16. #92 Arial of Avila and Port San Luis 1916
17. #96 Avila and Port (3 negatives)
18. #101 Refinery 1907
19. #118 Tunnel and Road - Old Port Harford (11 negatives)
20. #129 Union Oil Company Refinery 1907
21. #131 Don Miguel's Adobe Home built in 1853
22. #152 Pile Driver at Old Port Harford
23. #154 Old rail bridge at Avila damaged by flood 1914
24. #161 Oil tanks - P.C. Bridge 1915
25. #185 Tank Farm 1916
26. #267 Manual Simas Warf 1903
27. #272 Marre dam and pump station 1972 (2 negatives outside wrapping)
28. #286 Sand car on Avila Beach 1918



J. Conant
 Port St. B. Looking west
 Anila Beach From Main Highway
 Anila Beach " " "



4
 Sand Level Anila Beach
 1912 day #1



J. Conant
 Anila, Pa., Cal.
 1895
 Anila Adobe Hotel built
 Destroyed by fire Nov. 13, 1905
 1905 the wall founded upon the Anila
 Beach from the west of the Anila
 Beach. In History Book B. San Francisco
 Published in 1892 by Thompson & Co.



J. Conant
 Old } Anila Hotel }
 Photographs } Anila Hotel }
 after fire in 1905



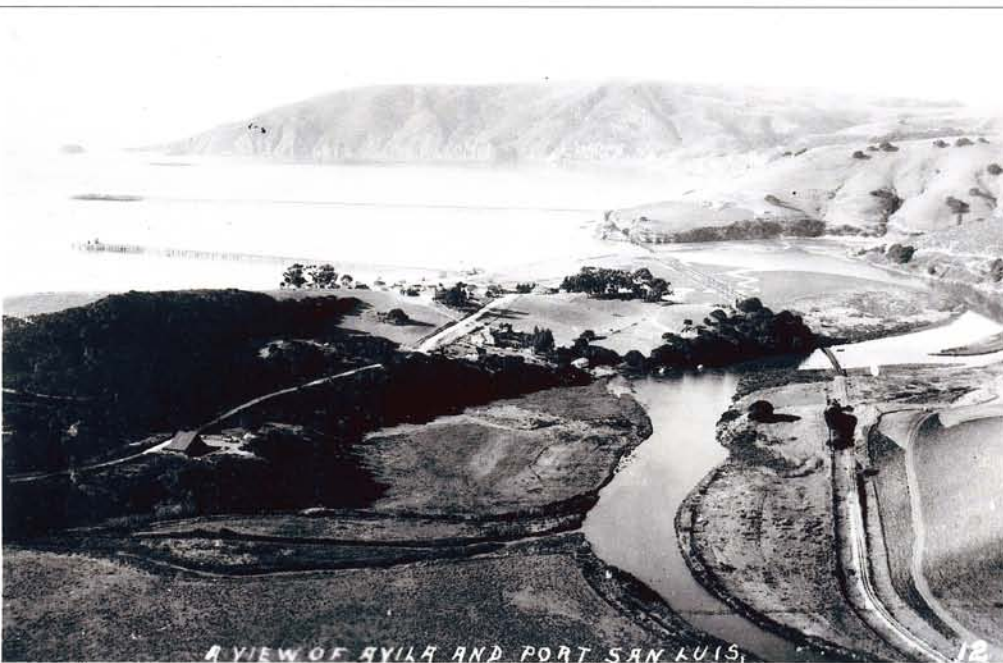
1908 (Continued with)
 1910
 Retaining wall Poles
 Anila Water Front



80
 Observations
 All the same as under Bridge
 at the 1956 photo
 but the one north later
 in fact the one north later
 with sand



Album 11 82
 Town of Orinda Beach
 April 1963
 From west
 end of the
 old Railroad Bridge



92
 1916
 View of Orinda Port San Luis
 From Spanish Mountains
 See #205
 (Duplicate of the 1916 photo)
 taken in 1963

A VIEW OF RIVER AND PORT SAN LUIS



Avila + Port 96
Pen old Port Hayford
+ Avila



101
Refinery at old Port Hayford
1907
1918

U.O. Co. Refinery
at Port San Luis, Cal.

Ansley - Photo - 76



107 161
 1915
 Anita Beach, Sand Cove
 Town of
 Del Norte P. O. Bridge
 Anita



185
 Anita Beach
 Cottage Row Anita
 U. S. O. Beach House
 1916



1923
 Anita Beach, California
 P.O. Box 66 - 93424
 1-910
 2-517
 Manuel Simas Wharf
 Warehouse
 267



272
 Wave Dam April 26, 1972
 Pump station
 Rancho Quemado
 Bridge near Avila Beach Plant



286
 San Miguel Spur track
 Sand Car on Avila Beach
 1918

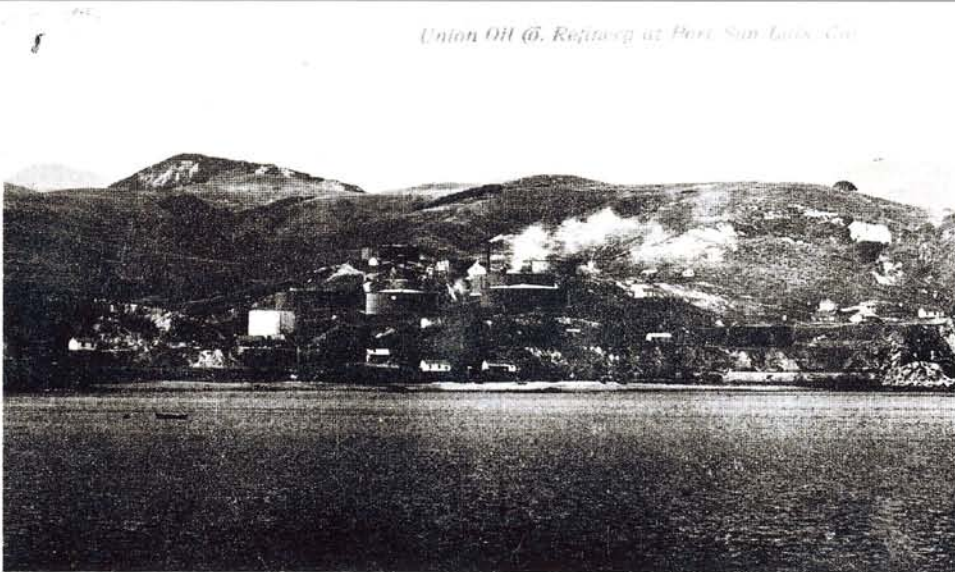


297
 Port SLO Warehouse Fire
 1915



Tunnel and Road
to Old Port Hayford

Union Oil @ Refinery at Port San Luis, Ca

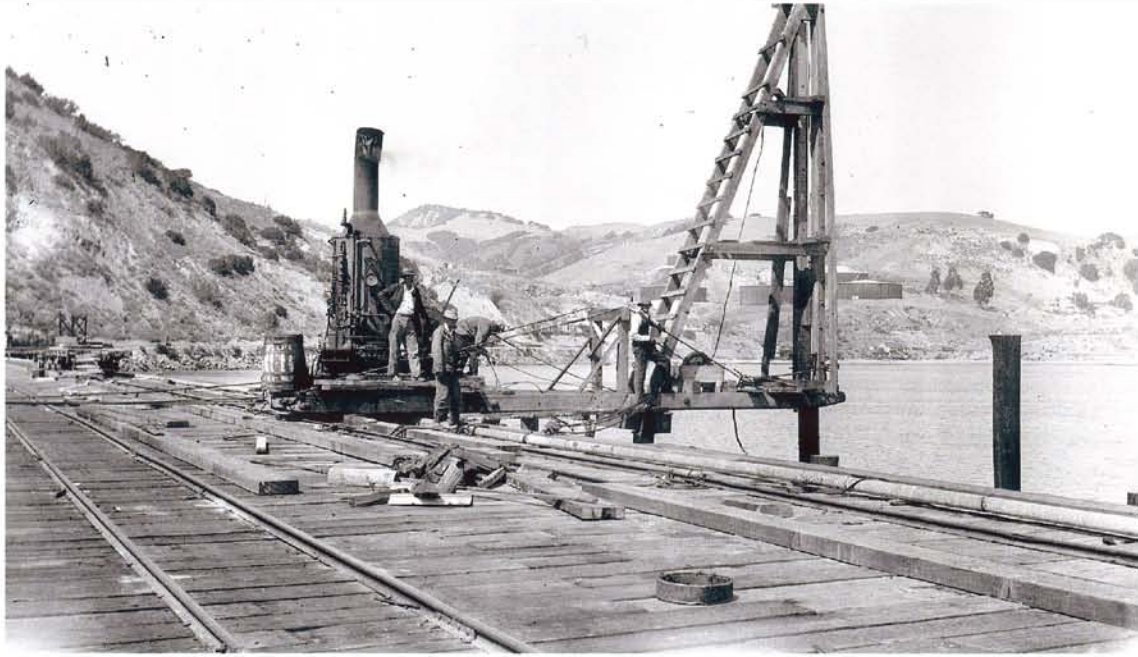


129
Union Oil Company Refinery
at Port Hayford, Ca
Looking north from the Bay
1907
4149. From Island
to
1913
Rount
I. Rank
1-5-17



131
 Built in
 Don Miguel's Abbe Home 1883
 near Old Wave House
 with ~~old~~ ~~stone~~ ~~work~~
 of ~~the~~ ~~same~~ ~~kind~~
 as ~~the~~ ~~old~~ ~~wave~~ ~~house~~
 at ~~the~~ ~~same~~ ~~place~~

Ansley Photo-4115



132
 2-5-1911
 Pile Driver at
 Old Port Hayford
 Chas Brown Wharf



137
 Old P.L. Rafters at Bertha
 Druggery's place water 1914
 The wood and built from front street
 back to the ~~back~~ ~~street~~ ~~at~~ ~~water~~
~~the~~ ~~same~~ ~~place~~ ~~as~~ ~~a~~ ~~part~~
 of the country system.

Ansley Photo-4112



9
Aerial view from beach of Light House
U.S. Post San Luis Bay
Looking East
Light House in foreground



U. Coast
Avila Beach, Calif
1911
3,587
Whitcomb San Miguel St. 10
Avila Beach, California
Avila Beach
Manuel James Water Works
Railroad San Miguel Street
Spur track near San Luis Beach Bridge
for hauling sand from beach
Also San Miguel Street spur
for same purpose



U. Coast
Avila Beach, Calif
1906
15
Avila Beach
First Pipeline through
Avila
Part of P.C. Trunk
1906



U. Coast
Avila Beach, Calif
16
Avila Beach
William Apartments
Seign Hotel on San Miguel Street
Morre Slaughter House



17
Old Western Camp Ground
Avila Beach, California



AVILA LOOKING EAST

1910

Avila Beach, Calif
U. Cant
1915 Avila Beach
Looking East 1915
Cowan Beach
18



AVILA LOOKING EAST

Avila Beach showing main ditch
View looking east
Enlargement Wall photo
20



Album No 2 70
Avila
Looking North East



Visit to Union at Canyon Canyon
 Enlargement of the photo
 The house #1



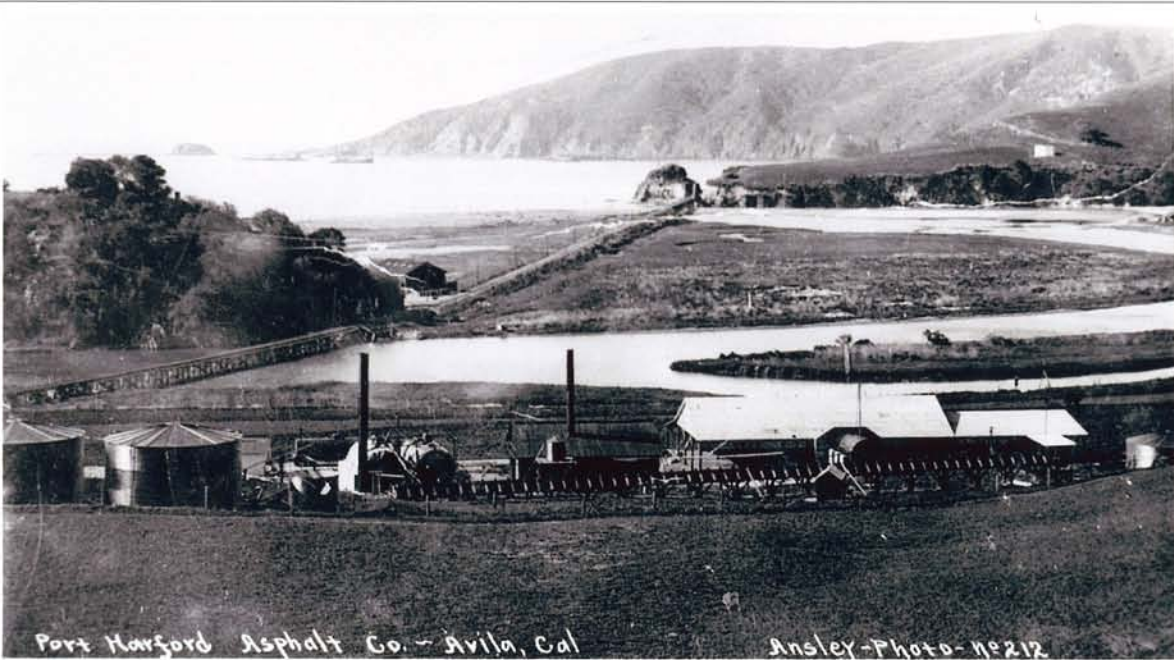
21
 Hauling Miller or Hester
 Supplies to the House
 Enlargement will get to.



7

AVILA, SHOWING THE BEACH

23
 Avila Beach
 Sand Box on Beach
 1912. Near Sand Box
 The house #2



Port Harford Asphalt Co. - Avila, Cal

Ansley-Photo-no 212

24
 Visit Port Harford
 Asphalt Plant
 2-5-17 Avila Beach 1911
 Avila Calif



26
 Monday April 19, 1862
 Enslavement
 11x16
 Cooks Beach
 Port Harford



32
 U. S. Coast
 Steamer Queen of the Pacific
 Number 11 and off
 Port Harford wharf

San Luis Obispo Tribune.

Vol. XVII—No. 2. SAN LUIS OBISPO, CALIFORNIA: FRIDAY, JANUARY 4, 1862. PRICE 50 CENTS.

HOTEL MARRE.

DAILY TRAIN TO SAN LUIS OBISPO.



FIFTEEN HOURS TO SAN FRANCISCO.

35
 Advertising Hotel Marre
 Jan. 8, 1862

Finest Seaside Resort on the Coast of California.
 Rates \$2 and \$2.50 Per Day.
 GAGLIARDO & MARRE, Proprietors.



Oil Boats - Port San Luis, Calif.

37
 Union Oil Tankers
 1925



38
 1914-1917
 Eptenberg Maschinenfabrik
 2-2279 OK



40
 C. Cant
 Port San Luis Light House
 Built 1890



42
*Steamship Santa Clara
 docked at the Avila Pier
 1907*
 U.S. Coast

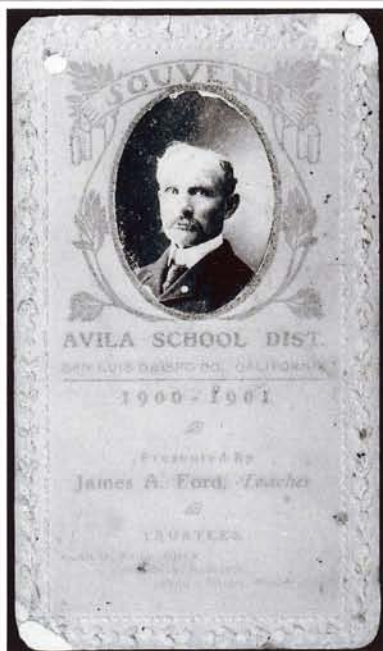
Santa Clara First ship to dock at the Avila Pier



43
 1913
*Port Harford Wharf
 Union Cal Extension
 Hotel name at port
 of wharf*



48
*Fire House # 4 location
 Avila Beach, California*
 U.S. Coast
 Avila Beach
 California



49
*Pupils Avila School
 1900-1901
 Ford Teacher*